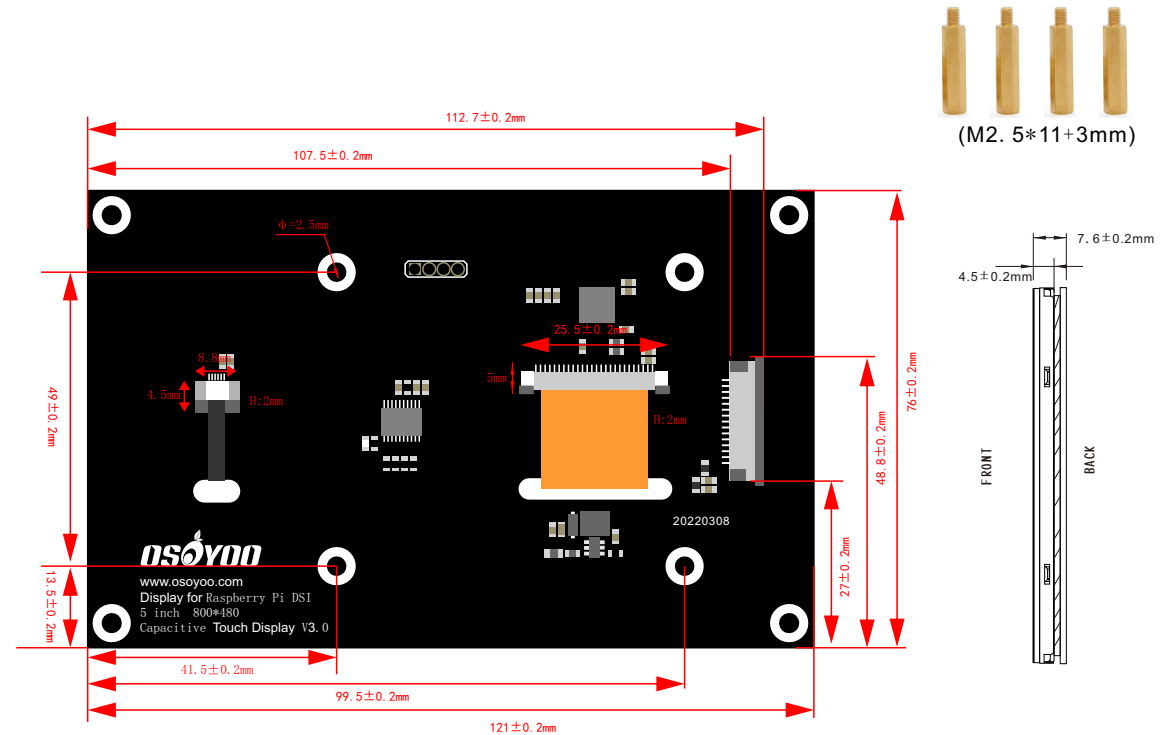
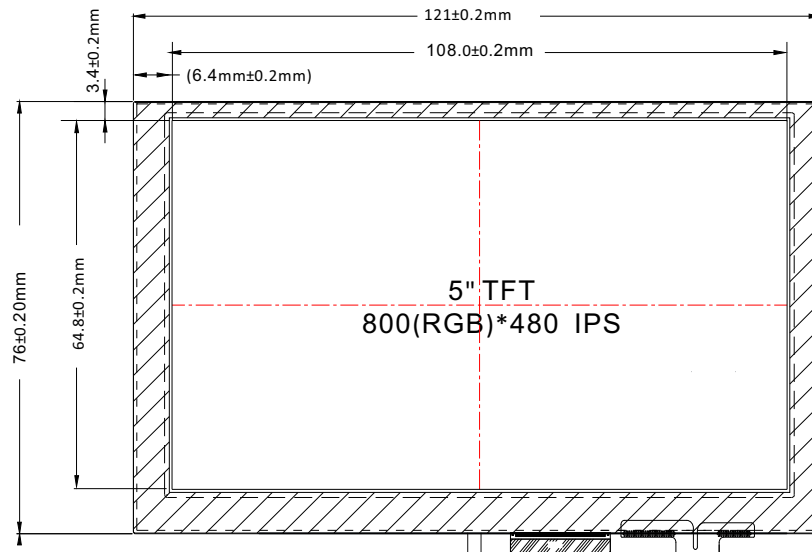


Raspberry Pi DSI Display 5 inch DSI

SIMPLIFIED DATASHEET

• Physical dimensions

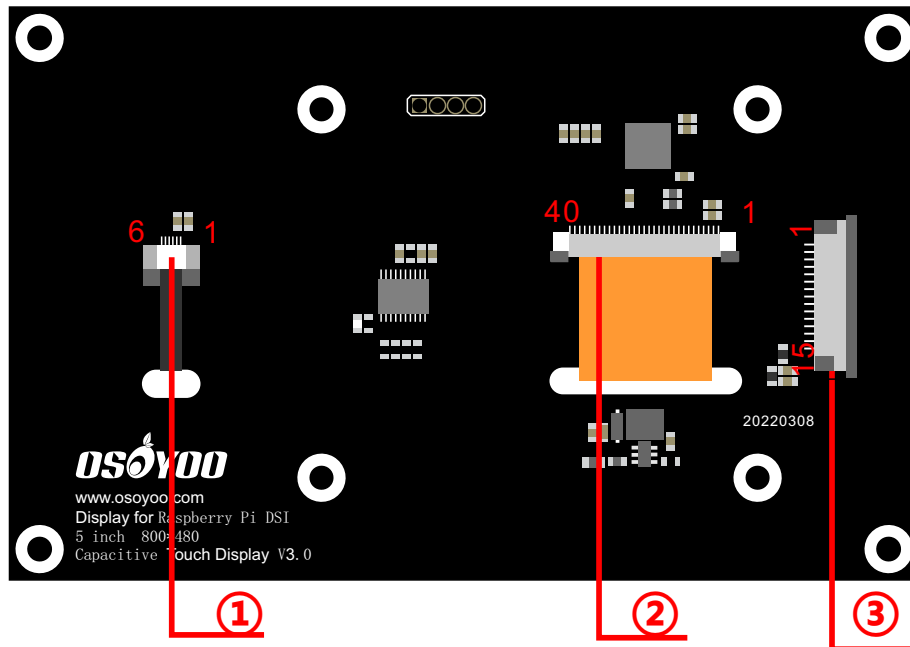


• Feature

- 5inch IPS screen, 800 x 480 hardware resolution.
- Capacitive touch panel.
- Supports Raspberry Pi 4B/3B+/3A+/3B/2B/B+/A+.
- DSI interface, refresh rate up to 60Hz.
- When used with Raspberry Pi, supports Raspberry Pi OS / Ubuntu / Kali and RetroPie, driver free.
- Supports software control of backlight brightness.

Raspberry Pi DSI Display 5 inch DSI

SIMPLIFIED DATASHEET



• Specification

Item	Contents	Unit	Note
LCD Type	TFT		
Panel Type	IPS		
Display Color	16.7M		1
Viewing Direction	ALL	O'clock	
Operating Temperature	-20~+70	°C	
Storage temperature	-30~+80	°C	
Module size	120.7(W) x75.90(H)	mm	
Active area	108.00(W)x61.80(H)	mm	
Number of dots	800xRGBx480	dots	
Backlight	12-LEDs(white)	pcs	
Data transfer	RGB interface		
Note 1: color tune is slightly changed by temperature and driving voltage			

• Pinout

Pin	Signal
1	GND
2	D1N
3	D1P
4	GND
5	CLKN
6	CLKP
7	GND
8	D0N
9	D0P
10	GND
11	SCL
12	SDA
13	GND
14	3V3
15	3V3

Pin	Signal
1	TP RST
2	VDD
3	VSS
4	TP INT
5	SDA
6	SCL

Pin	Signal
1	LED_K
2	LED_A
3	GND
4	VDD
5	R0
6	R1
7	R2
8	R3
9	R4
10	R5
11	R6
12	R7
13	G0
14	G1
15	G2
16	G3
17	G4
18	G5
19	G6
20	G7
21	B0
22	B1
23	B2
24	B3
25	B4
26	B5
27	B6
28	B7
29	GND
30	PCLK
31	DISP
32	HSYNC
33	VSYNC
34	DE
35	NC
36	GND
37	XR
38	YD
39	XL
40	YU