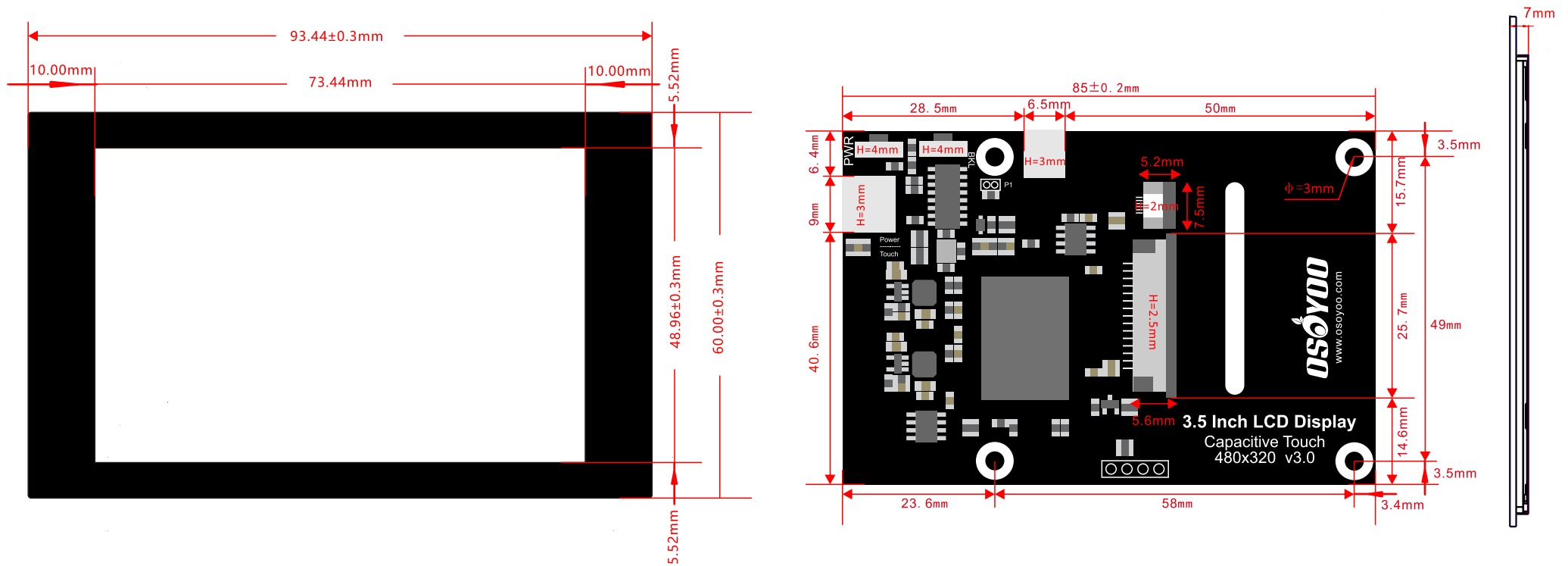
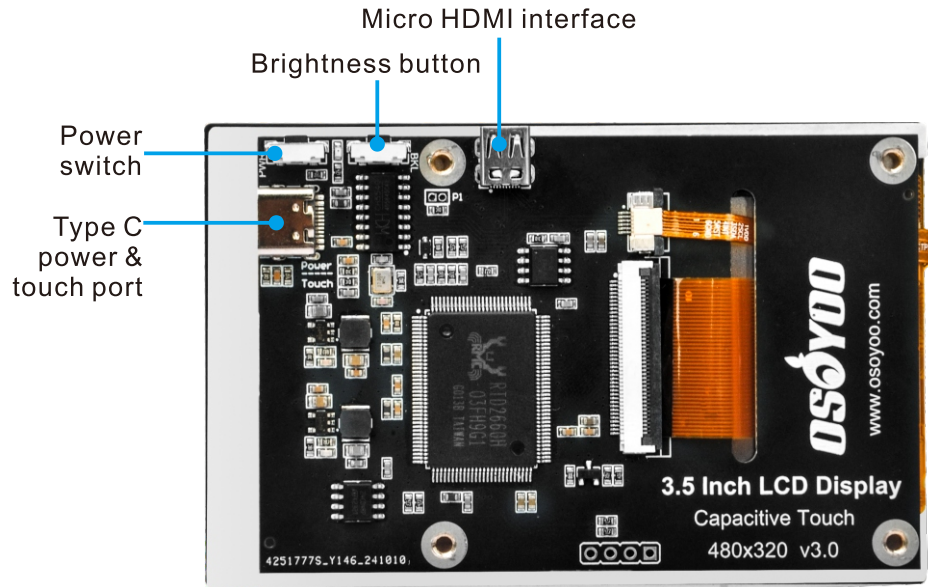


Physical dimensions



Feature:

- ⊙ 3.5-inch HDMI capacitive screen, 480×320 hardware resolution.
- ⊙ Supports Raspberry Pi OS / Ubuntu and Kali when used with Raspberry Pi.
- ⊙ Supports Windows 11 / 10 / 8.1 / 8 / 7 when used as a computer monitor.
- ⊙ Support rotate screen by button.
- ⊙ Supports up to 5-point capacitive touch.
- ⊙ Supports Ubuntu when used with Jetson Nano.
- ⊙ Supports power control & backlight control, more power saving.
- ⊙ Online tutorial: www.osoyoo.com/?p=58375.



•Specification

Item	Description	Unit	Note
Model	2024009100	/	
Touch Panel	Capacitive Touch	/	
Size	3.5	Inch	
Viewing Angle	130	Deg	
Resolution	480 × 320	Pixels	
Dimensions	93.44 × 60.00 × 7.00	mm	
Display Area	73.44 × 48.96	mm	
Color Gamut	80%	NTSC	
Maxium Brightness	300	cd/m ²	1
Contrast	500:1	/	2
Backlight Adjustment	Button Dimming	/	
Refresh Rate	60	Hz	
Display Port	Standard Micro HDMI Port	/	
Touch Port	5V USB Touch(Type-C)	/	
Power Consumption	Normal mode: 5V, 200~230mA (max brightness) Standby mode: 5V, 70~90mA (no signal, standby) Suspend mode: 5V, 20mA (power switch off)	/	
Operating Temp	-20~ +70	°C	
Storage Temp	-30~ +80	°C	
Mounting thread size	M2.5	/	
Package Size	130*90*40	mm	
Weight	55	g	

Note 1: The data are measured after LEDs are turned on for 5 minutes. LCM displays full white. The brightness is the average value of 9 measured spots. Measurement equipment PR-705 (Φ8mm)

Note 2: Definition of contrast ratio

$$\text{Contrast ratio}(Cr) = \frac{\text{Brightness of selected dots}}{\text{Brightness of non-selected dots}}$$