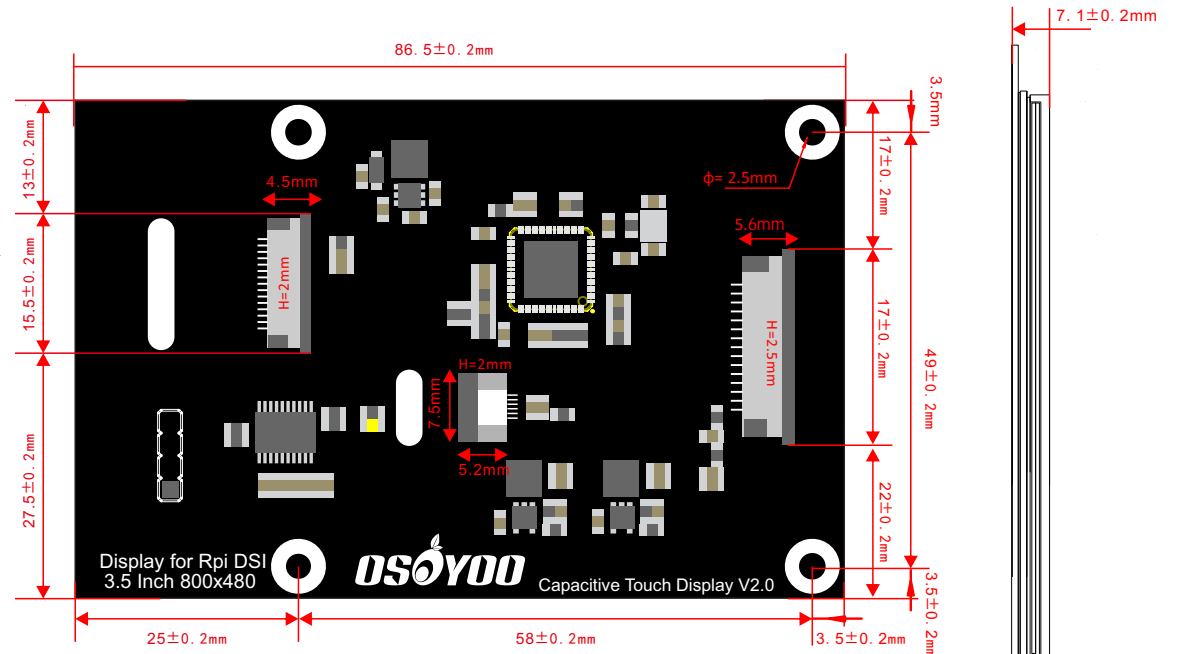
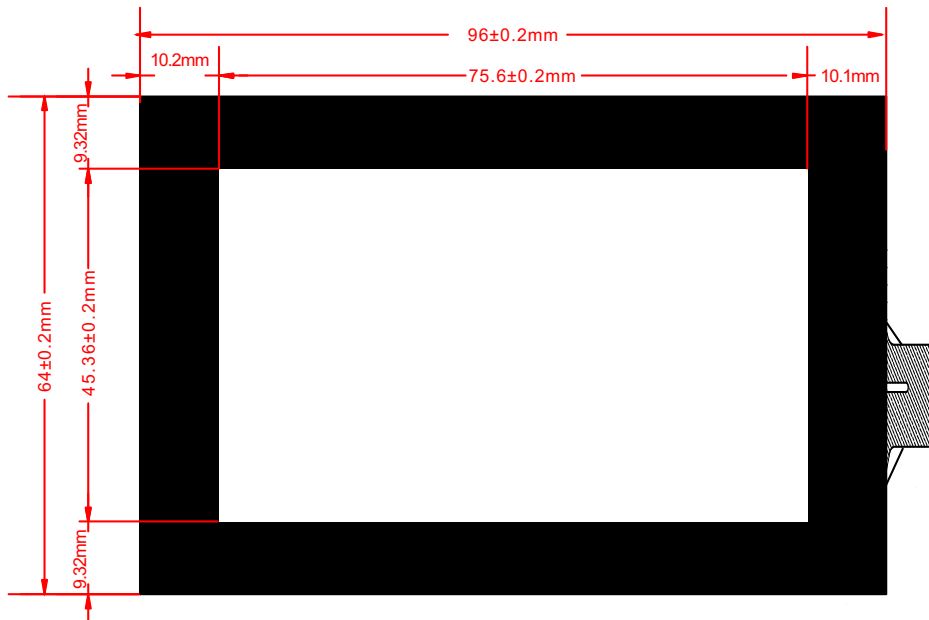


3.5 inch DSI Display for Raspberry Pi

SIMPLIFIED DATASHEET

Physical dimensions



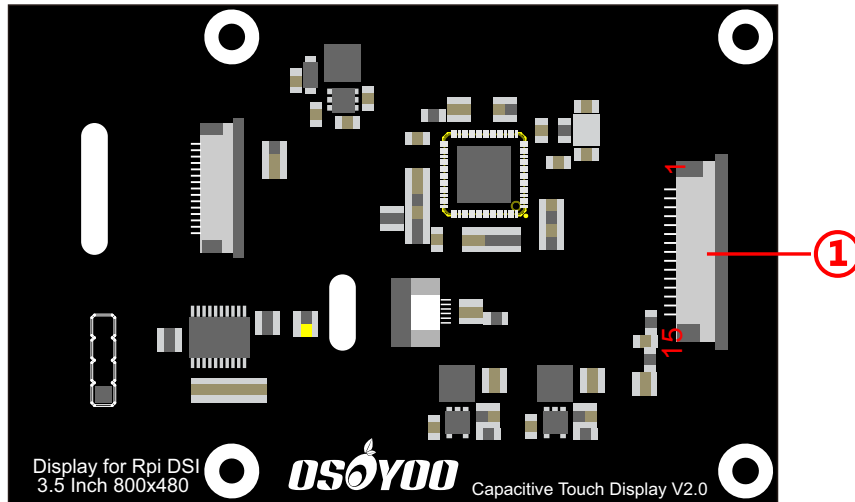
(M2.5*11+3mm)

Feature:

- 3.5inch IPS screen with a hardware resolution of 800 x 480.
- Capacitive touch panel
- Supports Raspberry Pi 5/4B/3B+/3A+/3B/2B/B+/A+ (You need a 22P-0.5mm to 15P-1mm FPC DSI cable for Raspberry Pi 5)
- As it directly drives LCD by the DSI interface of Raspberry Pi, the refreshing rate is up to 60Hz.
- Plug and play. No driver needed. Supports Raspberry Pi OS / Ubuntu / Kali and RetroPie when used with Raspberry Pi.
- Automacally sleep;
- Viewing angle: 85°, 85°, 85°, 85°

3.5 inch DSI Display for Raspberry Pi

SIMPLIFIED DATASHEET


•Pinout ①

Pin No.	Pin Name	Pin No.	Pin Name
1	GND	9	D0P
2	D1N	10	GND
3	D1P	11	SCL
4	GND	12	SDA
5	CLKN	13	GND
6	CLKP	14	3V3
7	GND	15	3V3
8	D0N		

•Specification

Item	Contents	Unit	Note
Panel Type	IPS		
Display color	16M		1
Viewing Direction	ALL	O'Clock	
Operating temperature	-20~+70	°C	
Storage temperature	-30~+80	°C	
size	96×64×7.1	mm	
Active Area(W×H)	75.6×45.36	mm	
Number of Dots	800×RGB×480	dots	
Power Supply Voltage	3.3	V	
Backlight	7-LEDs (white)	pcs	
Brightness	300	Nit	2
Data Transfer	MIPI	-	
Contrast Ratio	800		3
Respond Time	30	ms	

Note 1: Color tune is slightly changed by temperature and driving voltage.

Note 2: The data are measured after LEDs are turned on for 5 minutes. LCM displays full white. The brightness is the average value of 9 measured spots. Measurement equipment PR-705 (Φ8mm)

Note 3: Definition of contrast ratio

$$\text{Contrast ratio}(Cr) = \frac{\text{Brightness of selected dots}}{\text{Brightness of non-selected dots}}$$