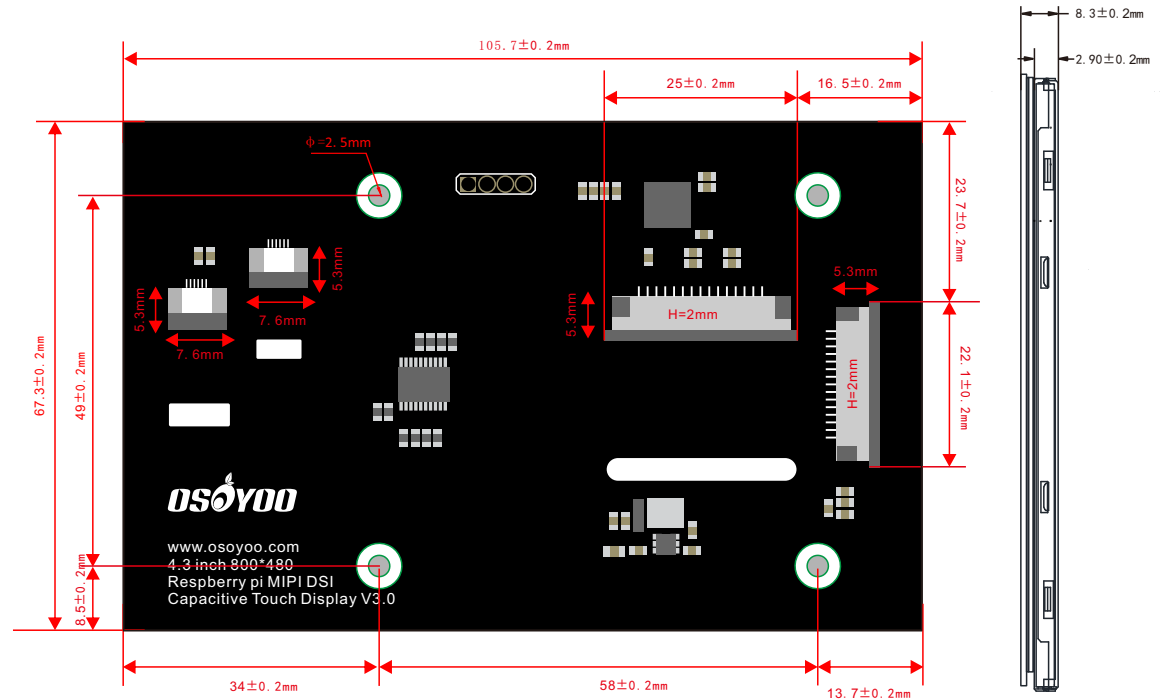
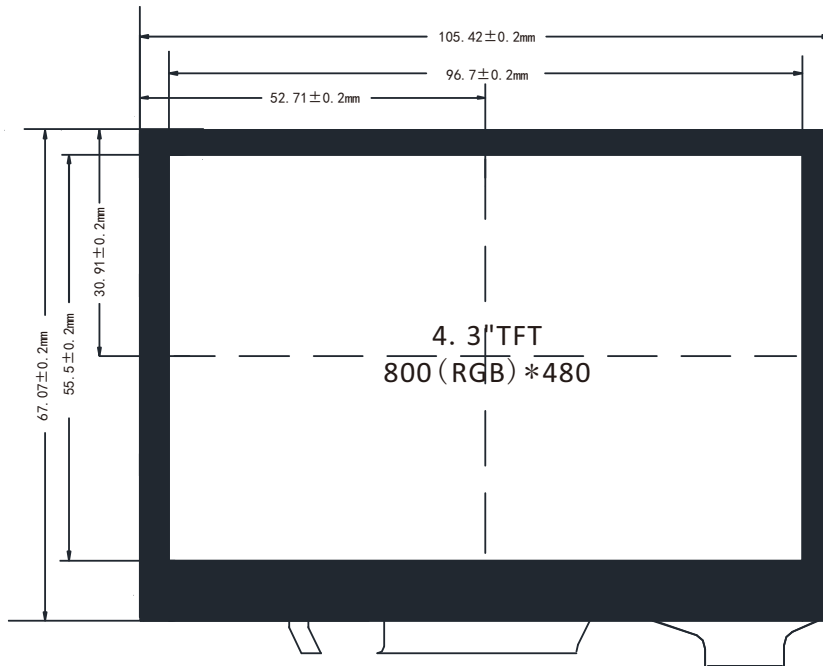


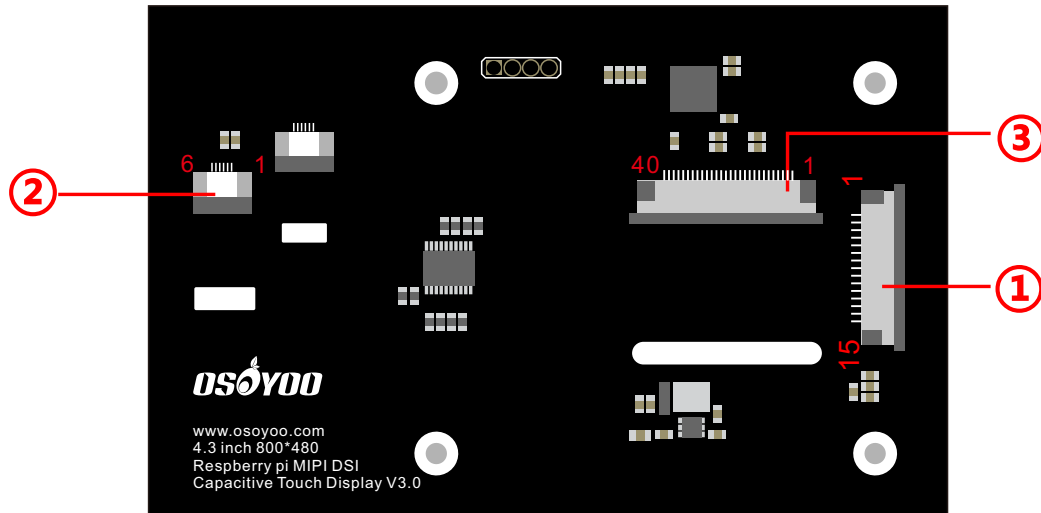
• Physical dimensions



• Feature

- Use DSI interface to connect Raspberry Pi board;
- Physical resolution is 800*480, 24-bit color. Support adjusted resolution from 800×480 to 1920×1080;
- 5 finger capacitive touch (but Raspbian only support 1 finger);
- Support system Raspbian, Ubuntu MATE, Snappy Ubuntu Core, OSMC, Windows 10 IOT Core and so on;
- Ultra-low power, ultra-long distance lossless transmission;

- The refresh frequency is 60HZ;
- Plug and play. No driver needed;
- Automatically sleep;
- Strong anti-interference;



• Specification

Ltem	Contents	Unit	Note
LCD Type	TFT	-	
Display color	16M		1
Viewing Direction	12	O'Clock	
Gray-scale inversion	6	O'Clock	
Operating temperature	-20~+70	°C	
Storage temperature	-30~+80	°C	
Number of Dots	800×RGB×480	dots	
Power Supply Voltage	3.3	V	
Outline Dimensions	Refer to outline drawing	-	
Backlight	18-LEDs(white)	pcs	
Brightness(LCM)	200	CD/M^2	
Data Transfer	RGB	-	

Note 1: Color tune is slightly changed by temperature and driving voltage.

• Pinout

①		
1	GND	
2	DIN	
3	DIP	
4	GND	
5	CLKN	
6	CLKP	
7	GND	
8	D0N	
9	D0P	
10	GND	
11	SCL	
12	SDA	
13	GND	
14	3V3	
15	3V3	

②		
1	RST-3.3	
2	VCC-3.3	
3	GND	
4	INT-3.3	
5	SDA-3.3	
6	SCL-3.3	

③	PIN	FUCTION
	PIN	SYMBOL
	1	VLED-
	2	VLED+
	3	GND
	4	VCC
	5	R0
	6	R1
	7	R2
	8	R3
	9	R4
	10	R5
	11	R6
	12	R7
	13	G0
	14	G1
	15	G2
	16	G3
	17	G4
	18	G5
	19	G6
	20	G7
	21	B0
	22	B1
	23	B2
	24	B3
	25	B4
	26	B5
	27	B6
	28	B7
	29	GND
	30	PCLK
	31	DISP
	32	HSYNC
	33	VSYNC
	34	DE
	35	NC
	36	GND
	37	XR
	38	YD
	39	XL
	40	YU