



7" PI-STUDIO CASE FOR RASPBERRY PI

All-in-one desktop solution



Made in China

Model :2024003100

Online Installation Tutorial: <https://osoyoo.com/?p=57403>

Online Installation Vedio: <https://osoyoo.com/2024003100.htm>



Online Installation Tutorial



Online Installation Vedio

Pinetree Electronics Ltd

Tel: +1-604-9001068

E-mail: support@osoyoo.info

お問い合わせメール (Japanese Only): keisyuu@vership.com

Manufacture: Pinetree Electronics Ltd

Address: 9180 Wellmond Road, Richmond, BC V7E1L5, Canada

EC **Name:** APEX ES SPECIALISTS, S.L.

Address: Grafenberger Allee 277, 40237 Düsseldorf, DE

REP **E-mail:** info@apex-ce.com

UK **Name:** APEX CE SPECIALISTS LIMITED

Address: 6f East Union Street, Manchester, M16 9AE, England

REP **E-mail:** info@apex-ce.com



Contents

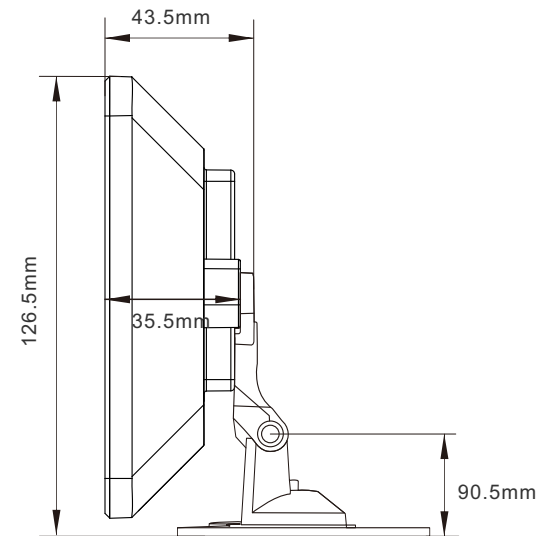
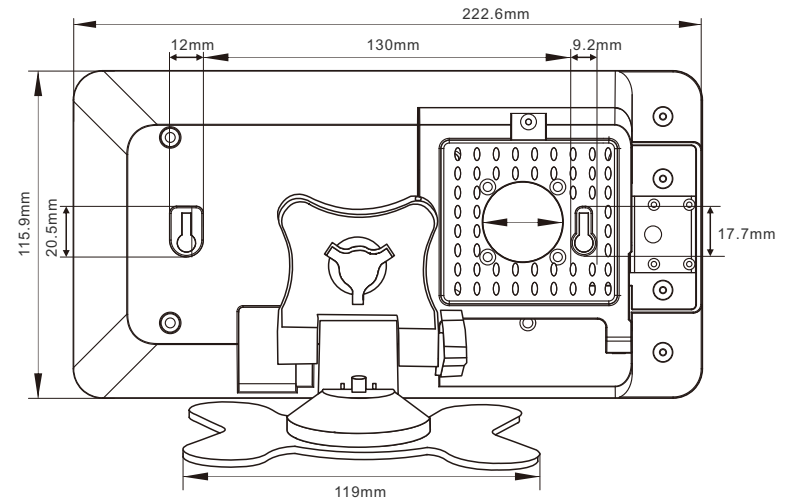
1、 Feature.....	1
2、 Product dimensions.....	2
3、 Installation Steps.....	3
4、 Safety warning.....	12

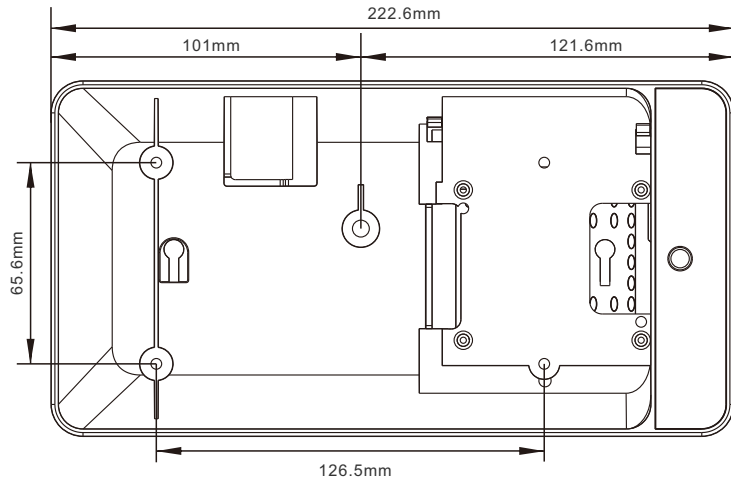
Feature

OSOYOO PiStudio Case is a case for Raspberry Pi Official 7inch DSI Display or OSOYOO 7inch IPS V4.0 DSI screen with Raspberry Pi board

- ⊙ Front plate with camera hole
- ⊙ Door with fan
- ⊙ Door for Raspberry Pi 5 with Active Cooler
- ⊙ Adjustable angle Stand holder
- ⊙ Wall mounting holes for hanging
- ⊙ Compatible with the Raspberry Pi B+, 2B, 3B, 3A+, 3B+, 4 and 5 (also for Pi 5 with Active Cooler)
- ⊙ It's compatible with Raspberry Pi V3 Camera, not compatible with Raspberry Pi camera V1 or V2 and HQ camera
- ⊙ Compatible with Raspberry Pi Official 7inch DSI Display and OSOYOO 7inch IPS V4.0 DSI screen

Product dimensions



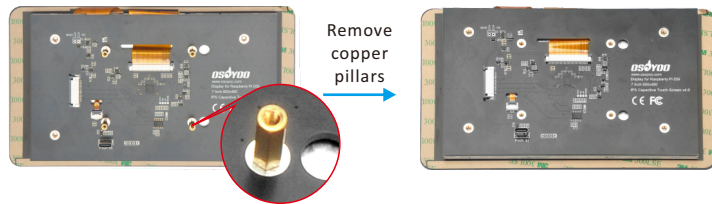


Installation Steps

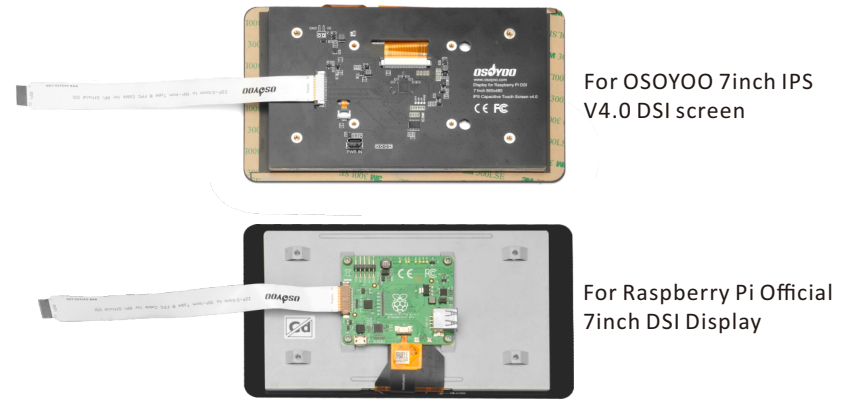
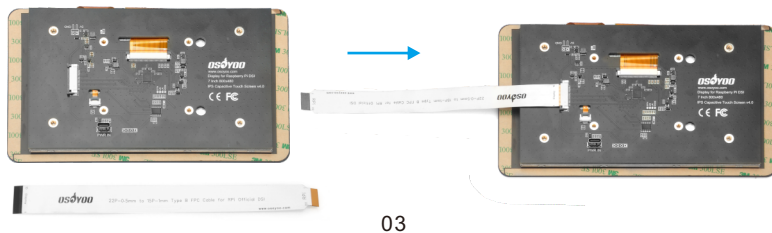
Online Installation Tutorial: <https://osoyoo.com/?p=57403>

Online Installation Vedio: <https://osoyoo.com/2024003100.htm>

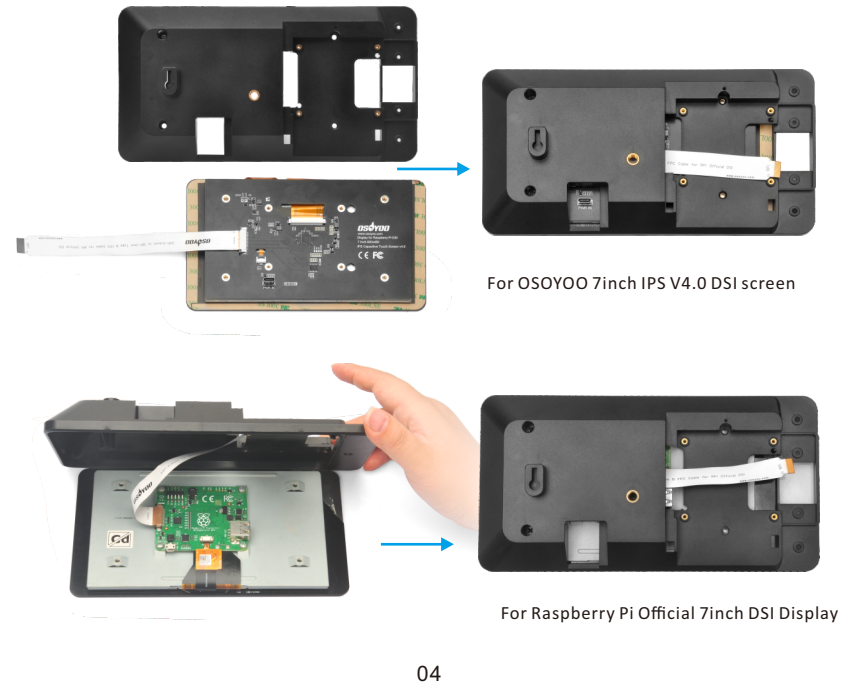
Step 0: If the case works with OSOYOO 7inch IPS V4.0 DSI screen, please remove the copper pillars at the back of screen



Step 1: Insert the 15pin-1mm end of DSI cable to OSOYOO 7inch IPS V4.0 DSI screen. (ATTENTION: The metal contact point is upward)



Step 2: Mount the display into the case as shown:



Step 3: Fix in the display using the 4pcs M3*6 screws.

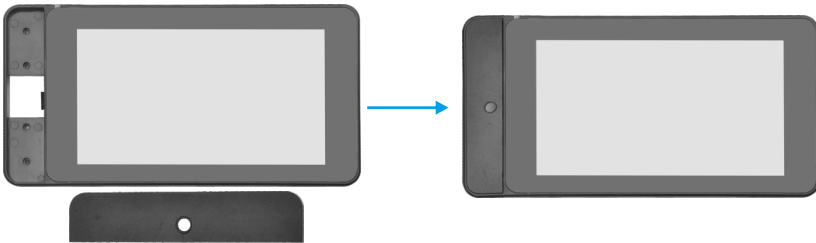


For OSOYOO 7inch IPS V4.0 DSI screen



For Raspberry Pi Official 7inch DSI Display

Step 4: Install front plate into the case as shown

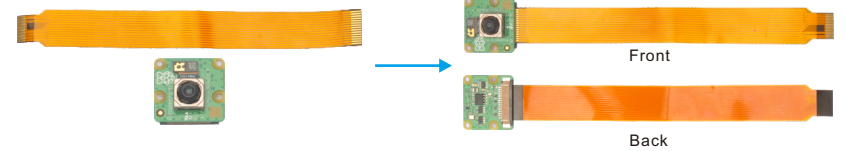


Step 5: Fix front plate with 4pcs M2.3*6 self-taping screws at the back side:



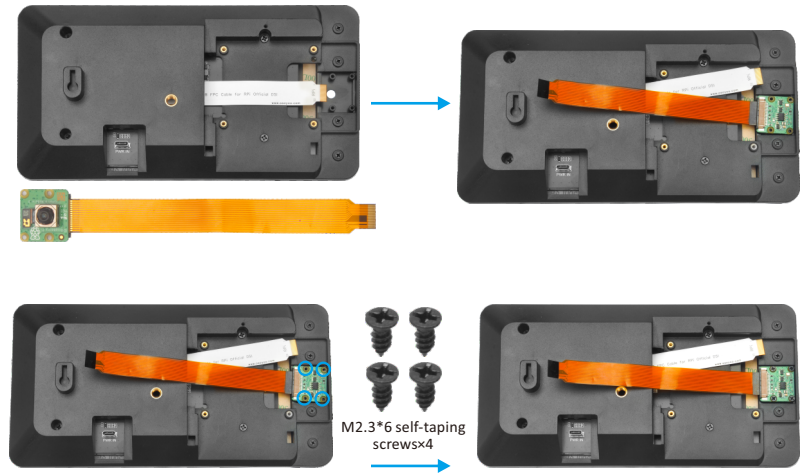
05

Step 6: Insert CSI V3 camera as following (please use about 15cm CSI cable)

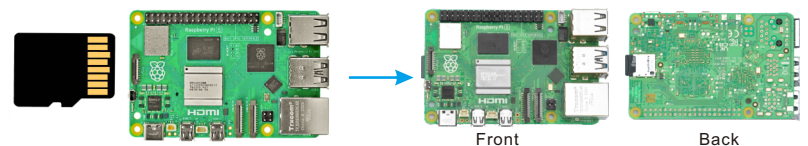


Note: CSI V3 camera and CSI cable don't include in the package

Step 7: Place V3 camera at the back of front plate as shown then fix it with M2.3*6 self-taping screws as the following:

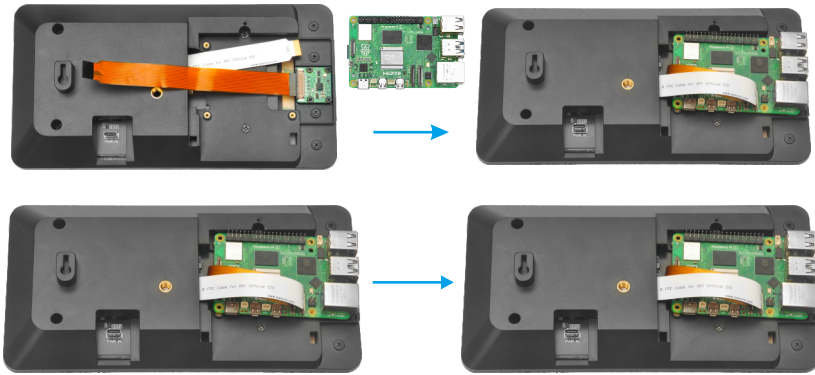


Step 8: Prepare a TF card and write OS image, then insert this card into Raspberry Pi TF card port



06

Step 9: Connect DSI and CSI cables to the Raspberry Pi DSI and CSI ports



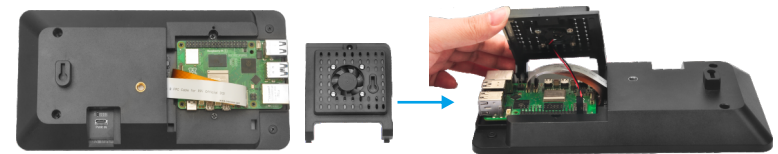
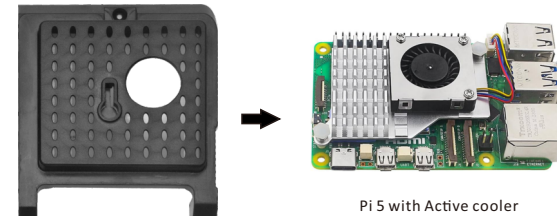
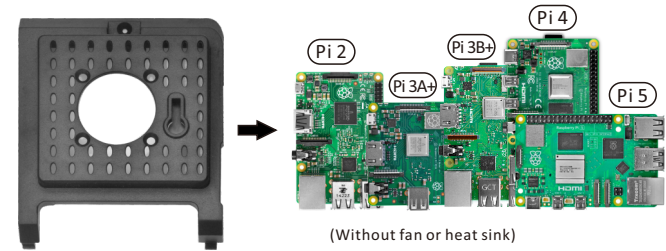
Step 10: Fix Raspberry Pi board on the case with 4pcs M2*6 screws as following:



07

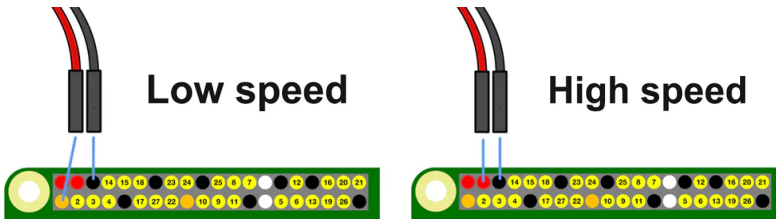
Step 11: Install fan on the door (Note: if you use Raspberry Pi 5 with active cooler, please skip step11-12)

Note: There are two doors in the package, please according to your Raspberry Pi to choose a correct door.



08

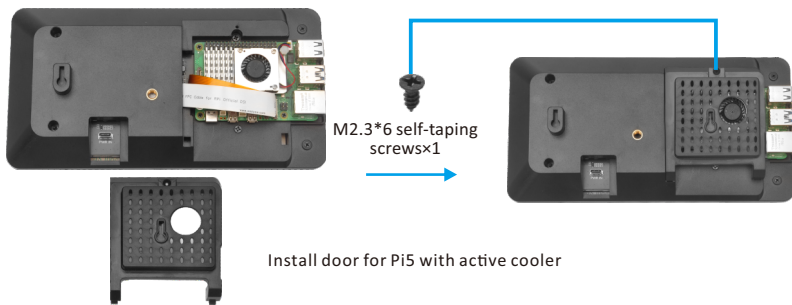
Step 12: Connect the wires of fan to the Raspberry Pi GPIO pins as the following (Note: We suggest starting with low speed as it is quieter. If you get the temperature icon in the display, you can always move up to the high speed.):



Step 13: Assemble the door. Be careful not to pinch cables, and fix the door with M2.3*6 self-taping screws



Install Door with fan

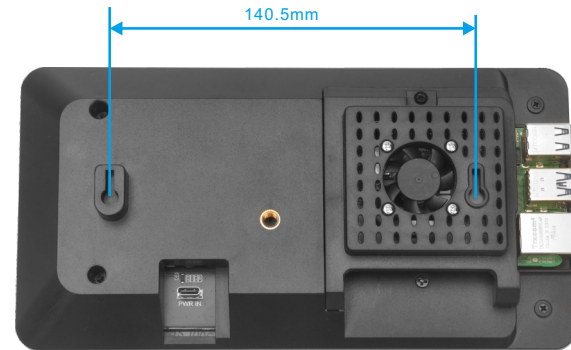


Install door for Pi5 with active cooler

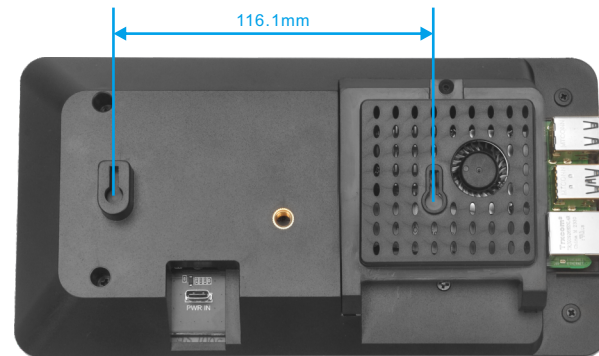
Step 14: Install the Stand holder on the back of case as shown:



If you want to hang this screen on the wall, please mark the screw positions on the wall according to the following dimensions first.

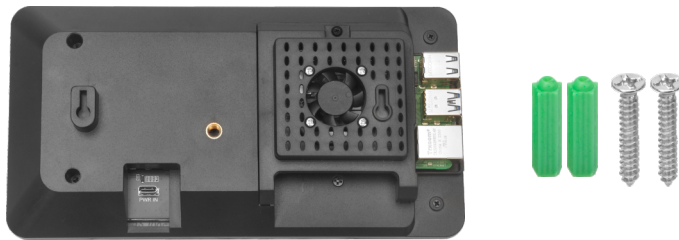
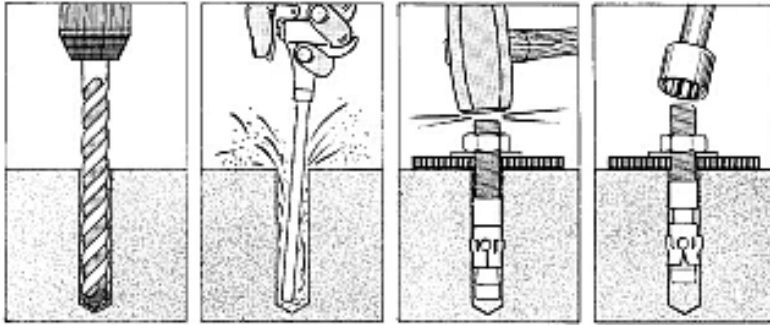


Install door with fan



Install door for Pi5 with active cooler

Then you can use the matching expansion screws to hang the screen back on the wall. (Make sure the screws are securely embedded in the wall before hanging the screen)



Safety warning

EN

1. Ensure adequate ventilation to prevent overheating when using the Raspberry Pi in this case.
2. Verify that all components are compatible with this case to ensure proper fit and function.
3. Make sure the Raspberry Pi is securely fastened in the case to avoid dislodgement or damage from movement.
4. Do not apply excessive force when assembling or disassembling the case as it may break.
5. Be cautious with cable routing to prevent pinching or crimping which can lead to electrical faults.
6. There are screws inside, keep them away from children to prevent them from being injured or swallowed.

DE

Sicherheitswarnung

1. Sorgen Sie für ausreichende Belüftung, um eine Überhitzung zu vermeiden, wenn Sie den Raspberry Pi in diesem Gehäuse verwenden.
2. Überprüfen Sie, ob alle Komponenten mit diesem Gehäuse kompatibel sind, um eine ordnungsgemäße Passform und Funktion sicherzustellen.
3. Stellen Sie sicher, dass der Raspberry Pi sicher im Gehäuse befestigt ist, um ein Lösen oder eine Beschädigung durch Bewegung zu vermeiden.
4. Wenden Sie beim Zusammenbauen oder Zerlegen des Gehäuses keine übermäßige Kraft an, da es brechen könnte.
5. Gehen Sie bei der Kabelführung vorsichtig vor, um ein Einklemmen oder Quetschen zu vermeiden, das zu elektrischen Fehlern führen kann.
6. Im Inneren befinden sich Schrauben. Bewahren Sie diese außerhalb der Reichweite von Kindern auf, damit sie nicht verletzt oder verschluckt werden.

FR

Avertissement de sécurité

1. Assurez une ventilation adéquate pour éviter la surchauffe lorsque vous utilisez le Raspberry Pi dans ce cas.
2. Vérifiez que tous les composants sont compatibles avec ce boîtier pour garantir un ajustement et un fonctionnement corrects.
3. Assurez-vous que le Raspberry Pi est solidement fixé dans le boîtier pour éviter tout déplacement ou tout dommage dû au mouvement.
4. N'appliquez pas de force excessive lors du montage ou du démontage du boîtier car il pourrait se briser.
5. Soyez prudent lors du cheminement des câbles pour éviter tout pincement ou sertissage pouvant entraîner des défauts électriques.
6. Il y a des vis à l'intérieur, gardez-les hors de portée des enfants pour éviter qu'ils ne soient blessés ou avalés.



Avviso di sicurezza

1. Garantire un'adeguata ventilazione per evitare il surriscaldamento quando si utilizza il Raspberry Pi in questo caso.
2. Verificare che tutti i componenti siano compatibili con questa custodia per garantire il corretto adattamento e funzionamento.
3. Assicurati che il Raspberry Pi sia fissato saldamente nella custodia per evitare spostamenti o danni dovuti al movimento.
4. Non applicare una forza eccessiva durante il montaggio o lo smontaggio della custodia poiché potrebbe rompersi.
5. Prestare attenzione all'instradamento dei cavi per evitare che vengano pizzicati o piegati, il che potrebbe causare guasti elettrici.
6. All'interno sono presenti viti, tenerle lontano dalla portata dei bambini per evitare che si feriscano o vengano ingoiate.

ES

Advertencia de seguridad

1. En este caso, asegúrese de que haya una ventilación adecuada para evitar el sobrecalentamiento cuando utilice la Raspberry Pi.
2. Verifique que todos los componentes sean compatibles con este estuche para garantizar un ajuste y funcionamiento adecuados.
3. Asegúrese de que la Raspberry Pi esté bien sujeta en el estuche para evitar que se desplace o se dañe por el movimiento.
4. No aplique fuerza excesiva al montar o desmontar la carcasa, ya que podría romperse.
5. Tenga cuidado al colocar los cables para evitar pellizcos o dobleces que puedan provocar fallas eléctricas.
6. Hay tornillos en el interior, manténgalos alejados de los niños para evitar que se lastimen o se los traguen.

JA:

安全上のご注意

1. このケースで Raspberry Pi を使用する場合は、過熱を防ぐために十分な換気を確保してください。
2. すべてのコンポーネントがこのケースと互換性があり、適切にフィットして機能することを確認してください。
3. Raspberry Pi がケースにしっかりと固定されていることを確認し、移動による外れや損傷を防いでください。
4. ケースを組み立てたり分解したりするときに過度の力を加えないでください。破損する可能性があります。
5. 挟まれたり圧着されたりして電氣的な障害が発生するのを防ぐため、ケーブルの配線には注意してください。
6. 内部にネジがあります。怪我をしたり飲み込んだりしないように、お子様の手の届かない場所に保管してください。