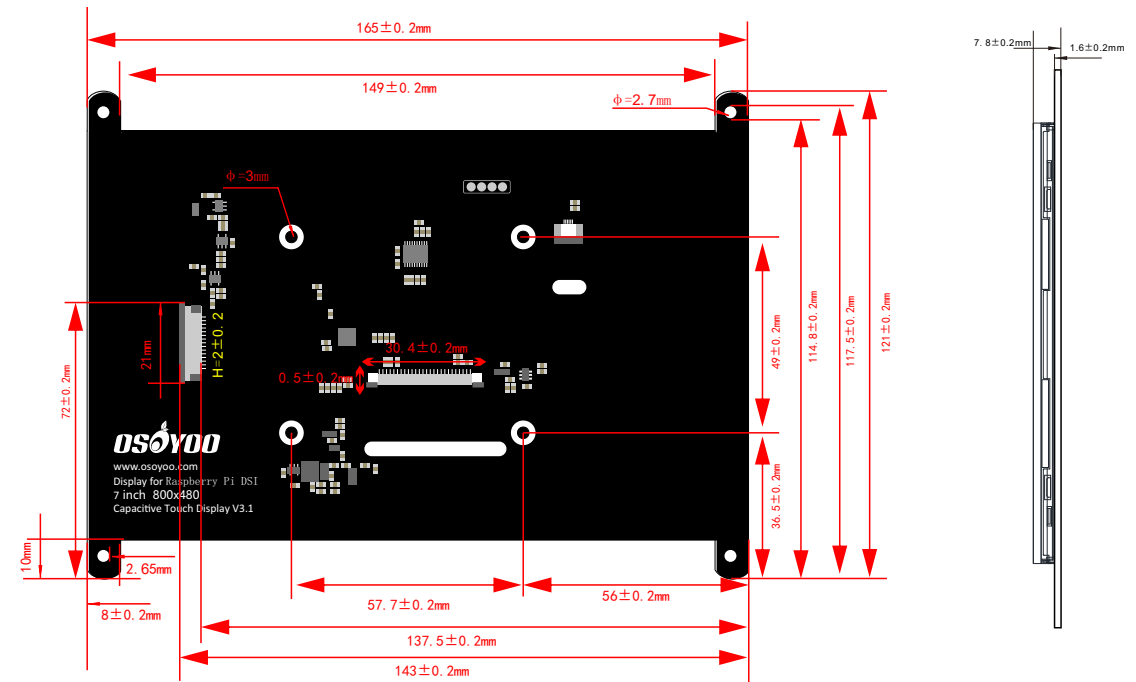
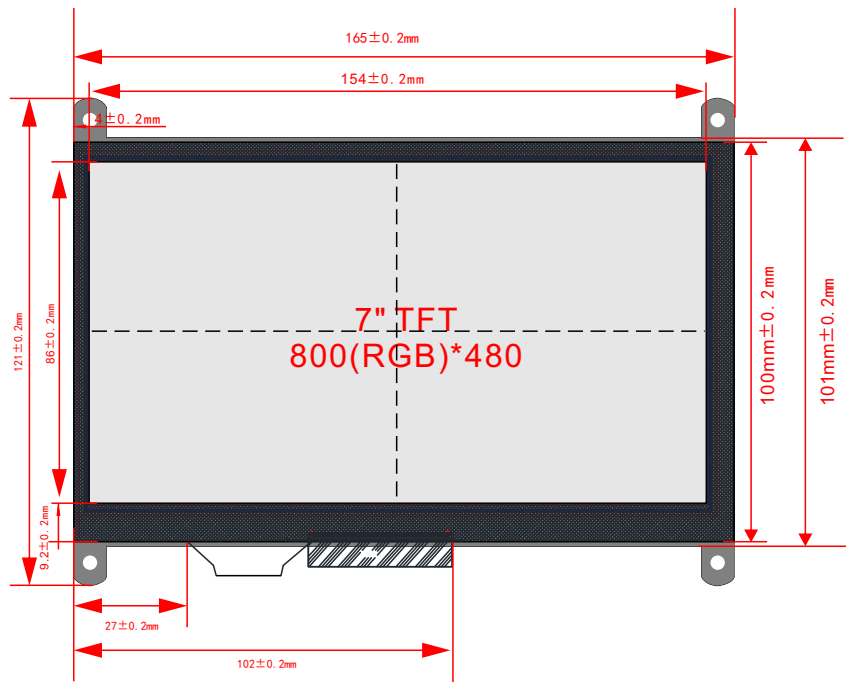
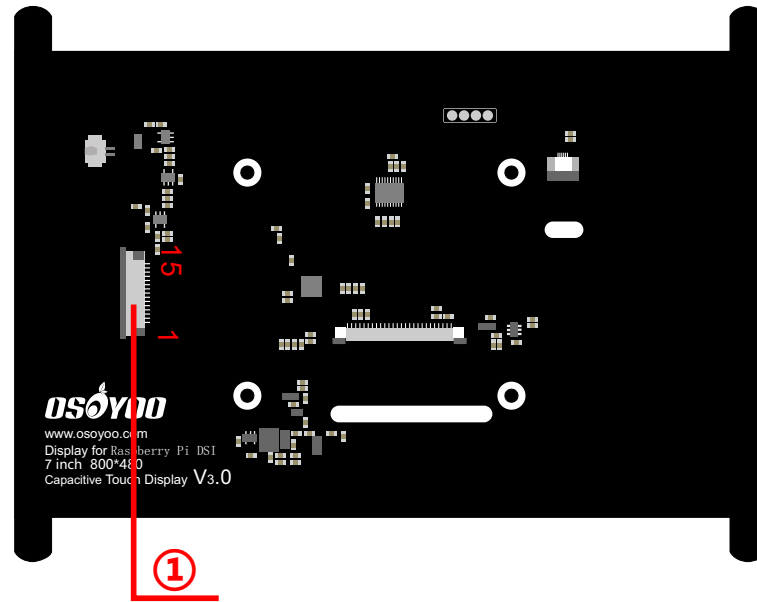


## Physical dimensions



- **Feature** Only Use DSI interface Connects to the Raspberry Pi board include power;
- Support multiple finger touch in Ubuntu and Windows IoT OS (1 Finger Touch in Rasbian)
- Free drive support Raspberry ,Ubuntu MATE, Kali, RetroPie, OpenElec, OSMC, Archsystem and so on;
- Ultra low power ,ultra-long distance lossless transmission, The screen will automatically sleep when it is not in use;
- The display size have changed from 800×480 to 1920×1080;
- The refresh frequency about 60HZ;
- It supports Raspberry Pi 2/3/3B+/4

- Physical resolution 800\*480, 24-bit color;
- Strong anti-interference;



## • Pinout

Pin No.	Function
1	GND
2	D1N
3	D1P
4	GND
5	CLKN
6	CLKP
7	GND
8	D0N
9	D0P
10	GND
11	SCL
12	SDA
13	GND
14	3V3
15	3V3

## • Specification

Ltem	Contents	Unit	Note
LCD Type	TFT	-	
Display color	16M		1
Viewing Direction	12	O'Clock	
Gray-scale inversion	6	O'Clock	
Operating temperature	-20~+70	°C	
Storage temperature	-30~+80	°C	
Number of Dots	800×RGB×480	dots	
Power Supply Voltage	3.3	V	
Outline Dimensions	Refer to outline drawing	-	
Backlight	18-LEDs(white)	pcs	
Brightness(LCM)	200	CD/M <sup>2</sup>	
Data Transfer	RGB	-	

Note 1: Color tune is slightly changed by temperature and driving voltage.